



TUBA Turbine GmbH
Paul-Ehrlich-Straße 15
60596 Frankfurt/Germany
Telefon: +49 69 69 71 61 61
Telefax: +49 69 69 71 61 41
Mobil: +49 171 75 25 838
Mail: office@tuba-turbine.de
Skype: tubaturbine
Internet: www.tuba-turbine.de

(Ref.-Nr. GT400)

16 MW Rolls-Royce- Avon 1534-102L for sale:



Technical Details:

Manufacturer	Rolls Royce
Type:	Avon 1534-102L
Year of manufacturer:	1978
Power:	base load 10 MW peak load 16 MW
Fuel:	Dual Fuel (Diesel and Natural Gas)
Condition:	Zero hour overhauled in 2008
Running hours:	zero after overhaul

Price:	1,8 MIO EUR , subject to prior sale
Payment:	Pre- Investment, Financing, IPP, Leasing possible.
Validity:	30 days prior to sale
Delivery:	immediately
Option:	Installation, Commissioning and Service

Please don`'t hesitate to contact us for further information.

Disclaimer

The content and works provided on these Web pages are governed by the copyright laws of Germany. Duplication, processing, distribution, or any form of commercialization of such material beyond the scope of the copyright law shall require the prior written consent of its respective author or creator.



GEC Turbine Generator Ltd.

Voltage	13.8 kV at 60 hz , 11.5 kV at 50 hz
Phase	3
Frequency	60 hz at 1800 rpm or 50hz at 1500 rpm
Coolant	Air cooled

Gear Box:-



GEC Marine and industrial Gear Ltd.
Type HSG28WH
Single reduction type
Speed ratio 6500/1800

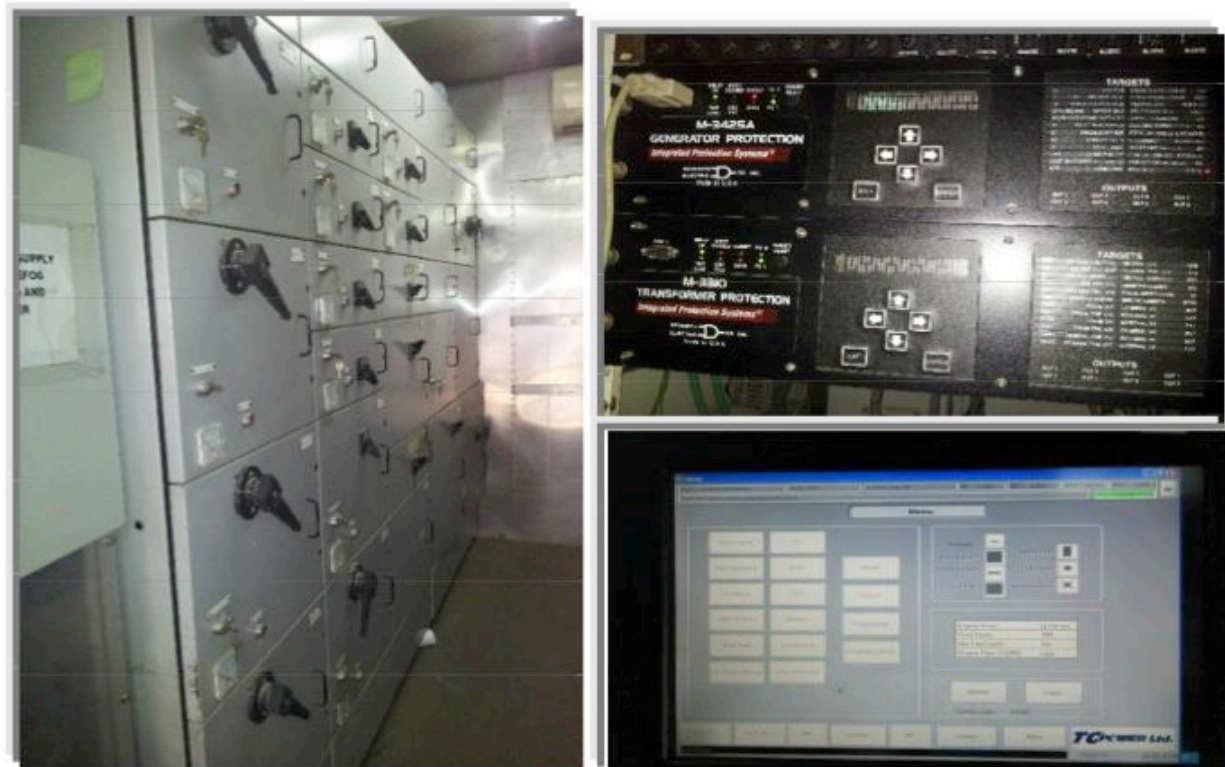
Trailer Enclosure:-



The Unit is packaged on heavy duty road design purpose trailer and can be setup quickly. It's with weatherproof acoustic enclosure and enclosure is completely assembled and mounted over the trailer.

Electrical System:-

The system having a SCADA controlled operations with PC interface. It comprises of Multi motor control panel, Generator and turbine protection system.



Fuel System:-

It's a Dual Fuel system with Diesel and Natural gas. The purpose of a fuel system is to supply an exact amount of clean fuel to the engine under all operating conditions. It comprises fuel filters, gas separators, fuel pumps and piping.



Turbine Exhaust:-

Power turbine exhaust passes through an insulated exhaust duct silencer to an exhaust stack which discharges the gasses to atmosphere. A splitter type silencer reduces exhaust noise to acceptable levels.



Air Inlet System:-



Gas & Fire detection System:-

Fire detection and protection systems use a combination of sensors or detectors to protect the gas turbine/generator set and to alert operators when a fire occurs. Control system initiates an immediate alarm on fire or excessive conditions, an indication that a fire has been extinguished and another indication if the fire re-ignites

