

(Ref.-Nr.: GT 393)

180 MW GE Frame 9E CCGP, 50 Hz, Dual fuel for sale:

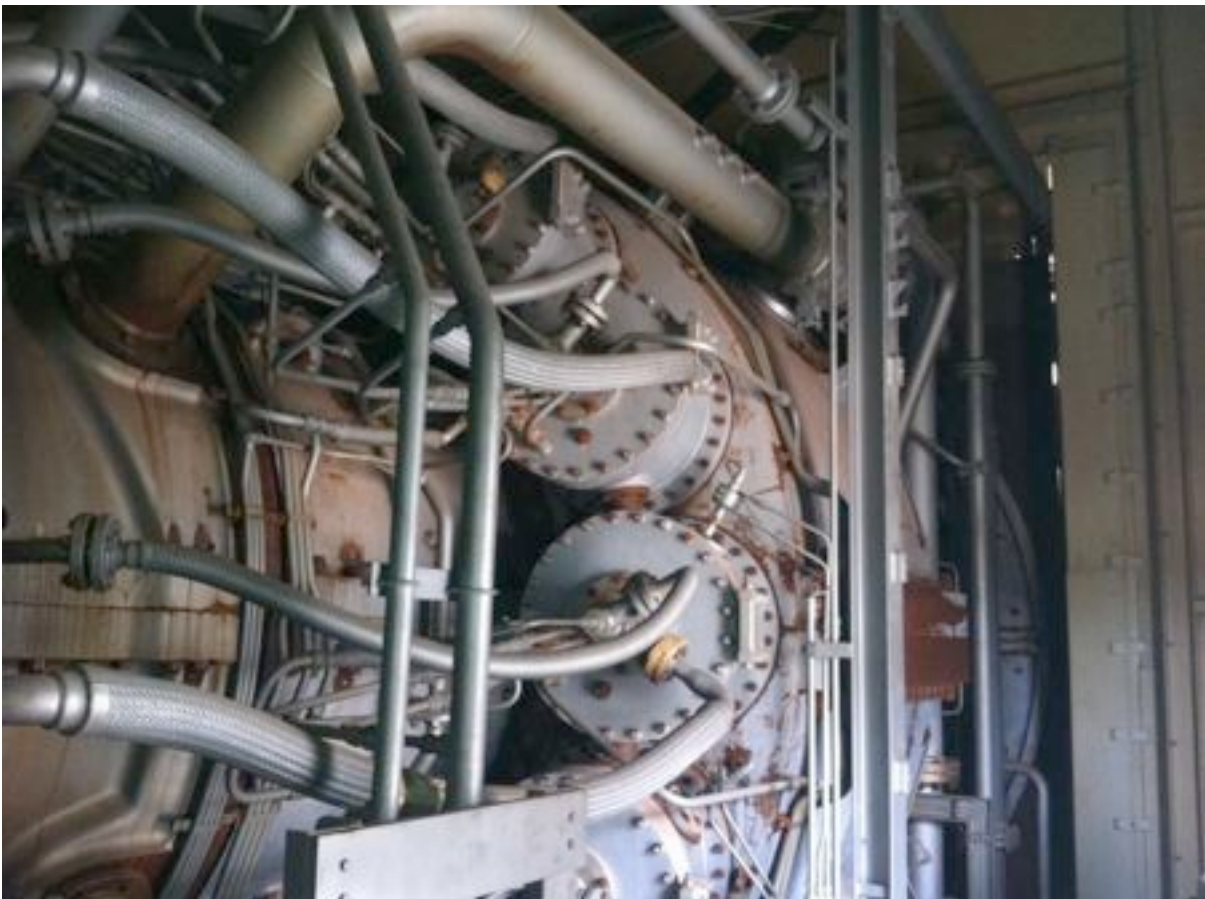


Techn. Datas:

Manufacturer:	General Electric
Type:	GE 9E CCGP
Power:	Gasturbine 125 MW, Steam Turbine 55 MW
Frequency:	50 Hz
Fuel:	LFO and NG
Year of manufacturer:	installed 2004 and operation 10/2005
Running hours:	2000



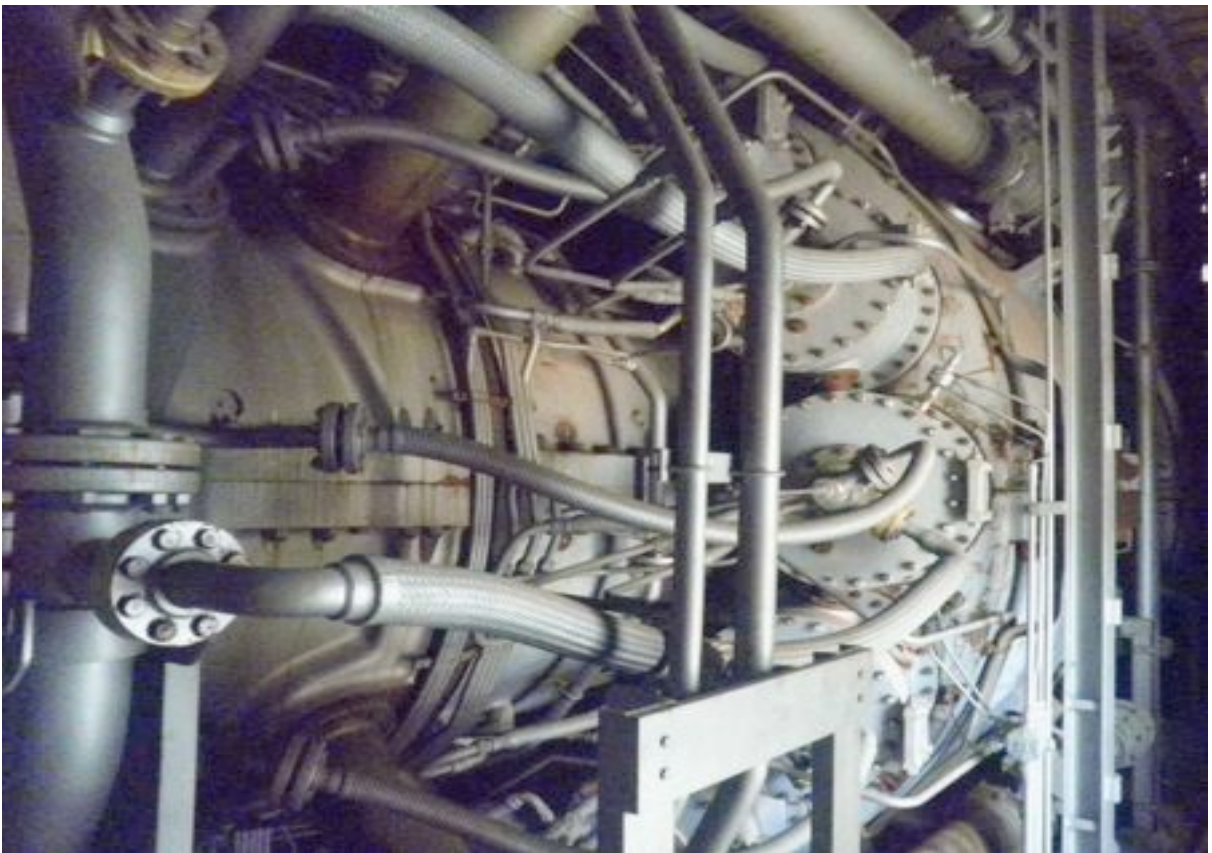












Price: 49,5 Mio EUR -subject to prior sale, as it is where it is

Delivery: immediately

Validity: 30 days prior to sale

Payment: To be agreed. financing and flexible payment possible.

Option: Commissioning, Installation and Service

Please do not hesitate to contact us for further information.

Disclaimer

The content and works provided on these Web pages are governed by the copyright laws of Germany. Duplication, processing, distribution, or any form of commercialization of such material beyond the scope of the copyright law shall require the prior written consent of its respective author or creator.